



User Guide

English

Creo PXT 4.5

Extension for QuarkXPress 6.5

Copyright

Copyright © 2005 Creo Inc. All rights reserved. The Creo wordmark, Creo logo, and the names of the Creo products and services referred to in this document are trademarks of Creo Inc.

Quark, QuarkXPress, and XTensions are registered trademarks of Quark, Inc. Adobe, Acrobat, Adobe Illustrator, Distiller, Photoshop, PostScript, and PageMaker are trademarks of Adobe Systems Incorporated. Apple, iMac, Power Macintosh, AppleShare, AppleTalk, TrueType, ImageWriter, and LaserWriter are registered trademarks of Apple Computer, Inc. Macintosh is a trademark of Apple Computer, Inc., registered in the U.S.A. and other countries. PANTONE, Hexachrome, PANTONE Hexachrome, and PANTONE MATCHING SYSTEM are the property of Pantone, Inc. PEARL, PEARLsetter, PEARLhdp, PEARLdry, and PEARLgold are registered trademarks of Presstek, Inc. XEROX®, The Document Company®, and the digital X® are trademarks of XEROX CORPORATION. Other brand or product names are the trademarks or registered trademarks of their respective owners.

No copying, distribution, publication, modification, or incorporation of this document, in whole or part, is permitted without the express written permission of Creo Inc. In the event of any permitted copying, distribution, publication, modification, or incorporation of this document, no changes in or deletion of author attribution, trademark legend, or copyright notice shall be made. No part of this document may be reproduced, stored in a retrieval system, published, used for commercial exploitation, or transmitted, in any form by any means, electronic, mechanical, photocopying, recording, or otherwise, without the express written permission of Creo Inc. This document is distributed in Adobe Systems Incorporated's PDF (Portable Document Format). You may reproduce the document from the PDF file for internal use. Copies produced from the PDF file must be reproduced in whole.

Creo Inc.
3700 Gilmore Way
Burnaby, B.C., Canada
V5G 4M1
Tel: +1.604.451.2700
Fax: +1.604.437.9891
<http://www.creo.com>

Internal 731-00552A-EN Rev A
Revised May 2005

About Creo PXT 4.5

Creo PXT 4.5 is an extension for QuarkXPress® that simplifies the creation of PostScript® files from QuarkXPress 6.5 and ensures that PostScript files exported from QuarkXPress conform to the Adobe® PostScript Document Structuring Conventions (DSC). Creo PXT 4.5 is available for both Macintosh® and Microsoft® Windows® platforms.

Creo's Preps®, TrapWise®, and TrapWise Remote software can process PostScript files exported from PXT. Creo PXT 4.5 is intended for use with these Creo products only—it is not tested or warranted for use with other prepress software.

New Features Since Creo PXT 4.0

Support for Mac OS X Version 10.4

Creo PXT 4.5 runs in Native mode on Mac OS X v10.4 (Tiger).

Benefits of Using Creo PXT

With Creo PXT 4.5, you can create an individual PostScript file from any single- or multiple-page QuarkXPress document, eliminating the hassle of managing dozens or even hundreds of single-page EPS files for an individual job.

Create multiple-page, composite PostScript files

Composite files created by Creo PXT are DSC-conforming and can be trapped and separated by TrapWise, and they can be imposed and separated by Preps.

Export as EPS single files

If downstream software requires single-page EPS files, Creo PXT has several options for exporting in EPS format.

Replace images with OPI comments

Creo PXT works in conjunction with Open Prepress Interface (OPI) servers, decreasing network traffic during PostScript processing and reducing file size during imposition.

Position pages consistently

PostScript files generated with Creo PXT contain detailed information required by prepress software to position pages properly. Registration mark offsets and other page positioning settings set in QuarkXPress do not affect page positioning in Preps.

Include different types of fonts in PostScript documents

Creo PXT includes PostScript Type 1, Type 3, TrueType®, and Multiple Master fonts in exported documents. A TrueType font in a QuarkXPress document is converted to a Type 1 font during export and embedded in the PostScript file. It is also possible to set font paths within Creo PXT 4.5 for Windows.

Automatically knock out some QuarkXPress elements for trapping

Use Creo PXT to override QuarkXPress default trap settings. This approach reduces the need to manually set boxes to knock out within the QuarkXPress Trap Information palette before processing by trapping software.

System Requirements

Creo PXT 4.5 for the Macintosh requires Mac OS X v10.3 (Panther), and early tests indicate that it is compatible with v10.4 (Tiger).

Creo PXT 4.5 for Windows requires Windows 2000, Windows XP Professional, or Windows Server™ 2003.

Only QuarkXPress version 6.5 is compatible with Creo PXT 4.5.

Installing and Using Creo PXT

Before You Install

Remove any existing copies of the following extensions from the **XTension** folder inside the **QuarkXPress** 6.5 folder. These extensions are incompatible with Creo PXT 4.5:

- Azalea PXT (APX)
- Adobe PXT (APX)
- Agfa® MSX (for MainStream®)
- Luminous™ PXT (LPX)
- ScenicSoft PXT (SPX or PXT)
- Creo PXT 4.0 and earlier versions
- Imation® PXT 1.8.2 and earlier versions
- Imation TrapZone XTension (TZXT)
- PS Utilities XTension (a free XTension from Quark)



Important: The preceding extensions must be completely removed from the **QuarkXPress** folder. Do not place their files in the **XTension Disabled** folder—they can cause conflicts with Creo PXT.

Installing Creo PXT

Ensure that QuarkXPress is not running, and copy **Creo PXT** to the **XTension** folder inside the **QuarkXPress** folder.

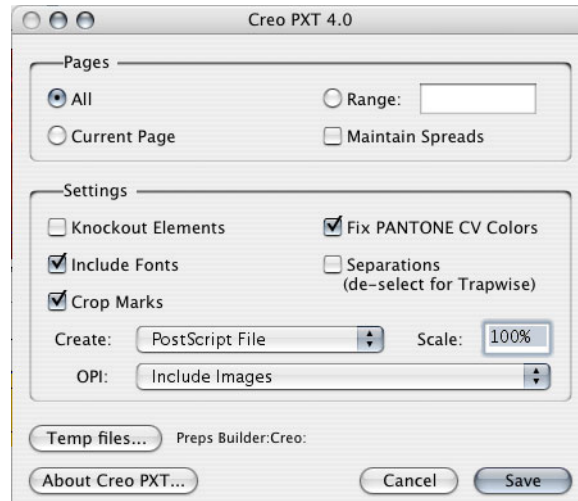
If you install while QuarkXPress is running, you must quit and restart QuarkXPress before you can use Creo PXT.

Exporting Files

Creo PXT works much like other QuarkXPress extensions and is fully compatible with QuarkXPress 6.5. Before using Creo PXT, save document files and verify that the links to graphics and fonts are accurate and updated.

To export a file using Creo PXT:

1. From the **Utilities** menu in QuarkXPress, choose **Export for Prepress**.



2. In the **Pages** area, select **All** pages, the **Current Page**, or a **Range** of pages to export. To print a portion of the document, type the first and last number of the pages in one or more page ranges, separating each pair by a hyphen and each range by a comma. For example, 1-3, 5-7, 11 indicates pages 1, 2, 3, 5, 6, 7, and 11. Backward printing (for example, 8-1) is also acceptable.

See *Exporting QuarkXPress Documents in Spreads* on page 8 for more information on how to export spreads by typing in page numbers.

3. To maintain spreads as they appear in the **Document Layout** palette in QuarkXPress, select the **Maintain Spreads** check box.

See *Exporting QuarkXPress Documents in Spreads* on page 8 for more information on the **Maintain Spreads** function.

4. To override some of the QuarkXPress default overprint document settings, in the **Settings** area, select the **Knockout Elements** check box. This feature is available only for composite output from QuarkXPress 6.5. Original trap settings are restored after export.

For more information about this feature, see *Autotrapping and Overprinting* on page 7.

5. To embed the document's fonts in the PostScript file, select the **Include Fonts** check box. The fonts can be copied from the system's **Fonts** folder, or they can be provided through a font-sharing utility such as Extensis® Suitcase™, ALSoft® MasterJuggler®, or Adobe Type Manager®.

Creo PXT includes different font types, including PostScript Type 1 and 3, Multiple Master, and TrueType.

Because Windows does not provide system support for managing fonts, in the Windows version of Creo PXT you can define font paths so that fonts can be easily located and embedded.



Note: If you select the **Include Fonts** check box, Creo PXT embeds all used fonts in the exported file. If the fonts **Helvetica**, **Courier**, and **Symbol** are not used in the document, QuarkXPress no longer automatically embeds them in the exported file, unlike earlier versions of PXT.

6. Select the **Crop Marks** check box to add crop marks, as well as the output file name, date, and time information, to EPS or PostScript output.
7. Select the **Fix PANTONE CV Colors** check box to take advantage of Creo PXT's capability to compensate for the deletion by QuarkXPress of the trailing **C** or **U** from PANTONE CVC or CVU spot color inks.

Creo PXT looks through the DSC tags for spot colors, and if it finds **CV** as a duplicate of a CVC or CVU ink, it replaces the **CV** with CVC or CVU.

If the **CV** could match either a CVC or CVU, Creo PXT prompts you to choose one or the other.

This query prevents downstream software such as TrapWise or Preps from interpreting the **CV** and the CVC or CVU as two separate inks.



Note: Due to a QuarkXPress bug, this feature does not work correctly with the Macintosh version of QuarkXPress 6.5.

8. **Preps:** Select the **Separations** check box to generate a pre-separated (DCS-2) PostScript file that can be added to Preps.

TrapWise: Do not use the **Separations** option when you export PostScript for use with TrapWise. Create composite PostScript or EPS files only.

9. In the **Create** box, choose from the following options:

- **PostScript**

This is the default setting, which creates a single DSC-conforming PostScript file that includes all pages exported.

- **EPS File(s)**

Select one of the following options if downstream software requires single-page EPS files:

- **EPS File(s), no preview**

Use if a preview is not required.

- **EPS File(s), PC preview**

This option provides a TIFF preview embedded in the EPS file. This preview can be used with both Macintosh and Windows software.

- **EPS File(s), Mac preview.**

This option creates EPS files with PICT preview data embedded in a resource fork that can be used only with Macintosh software.



Note: When you select **EPS file(s)**, Creo PXT appends a number to each EPS file name sent to the destination location (for example, *filename.01*, *filename.02*, and so on).

10. In the **OPI** box, select one of the following options:

- **Include images**

Embeds imported images in the file.

- **Include images & OPI comments**

Embeds the images and includes OPI comments for each image, so that image source information can be viewed in TrapWise and Preps.

- **Omit TIFF or Omit TIFF & EPS**

Replaces imported images with OPI comments, so that the high-resolution version can be inserted by an OPI server or by software with OPI-linking capabilities, such as Preps Pro or Preps XL. For the best results with TrapWise or TrapWise Remote, use the **Omit TIFF** option. Also select the **Omit TIFF** check box if the document contains “colorized” TIFFs.



WARNING: Never use **Omit TIFF & EPS** with TrapWise—TrapWise does not do OPI replacement for EPS files. Low-resolution preview is used for trapping.

11. Click **Set Font Paths** (Windows only) to set the locations where Creo PXT looks for fonts. Click **Add**, select a target folder, and click **Select** to add a folder to the **Font Paths** list. You can select multiple locations. You need to use this function only when font paths are added or changed, because Creo PXT stores the information you enter.

12. Click **Temp Files** to indicate in which folder on a local hard drive to store the temporary files generated during export. Select a target folder with enough disk space to store the intermediate work files during processing, and click **Select**. You do not need to do this again, except to select a new folder.

13. Click **Save** to export the file.

Autotrapping and Overprinting

Note the following points about autotrapping and overprinting in QuarkXPress:

- PostScript files retain QuarkXPress autotrapping settings only if they are generated when the **Separations** check box is selected in Creo PXT.
- Autotrapping is disabled when producing composite output.
- When the **Knockout Elements** check box is selected, Creo PXT temporarily changes the trapping settings of some frame elements from “Default” to “Knockout.”
- Frame content (for example, text and images) is not affected by the **Knockout Elements** option. If you want type and other box contents (such as imported elements) to knock out rather than overprint, set these features manually in the QuarkXPress **Trap Information** palette. Table 1 outlines the effect that **Knockout Elements** has on items in the **Trap Information** palette.



Note: The **Knockout Elements** option in Creo PXT 4.5 does not permanently change the trapping attributes of the boxes in the QuarkXPress source document. After you export with Creo PXT 4.5, autotrapping settings are restored.

Table 1: How the Knockout Elements feature affects QuarkXPress elements

Element Type	Result
Picture box with a 0 pt. frame	Background—knockout Picture—default (n/a with EPS)
Picture box with non-zero pt. frame	Frame inside—knockout Frame outside—knockout Picture—default (n/a with EPS)
Text box with a 0 pt. frame	Background—knockout Text—default
Text box with non-zero pt. frame	Frame inside—knockout Frame outside—knockout Text—default
Line	Line—Knockout

Exporting QuarkXPress Documents in Spreads

To preserve custom layouts during output, you can export documents arranged in spreads the way they appear in the **Document Layout** palette. When you select the **Maintain Spreads** check box and type numbers in the **Range** box, Creo PXT exports the specified range based on the page numbers that you specified.

You do not need to count spreads to choose the correct input range. For example, when you export from a document with eight pages in reader spreads and you type 3, 6 in the **Range** box, Creo PXT automatically exports the correct spreads—in this case, it exports the spreads numbered 2 and 4, because the second and fourth spreads contain pages 2–3 and 6–7, respectively.

